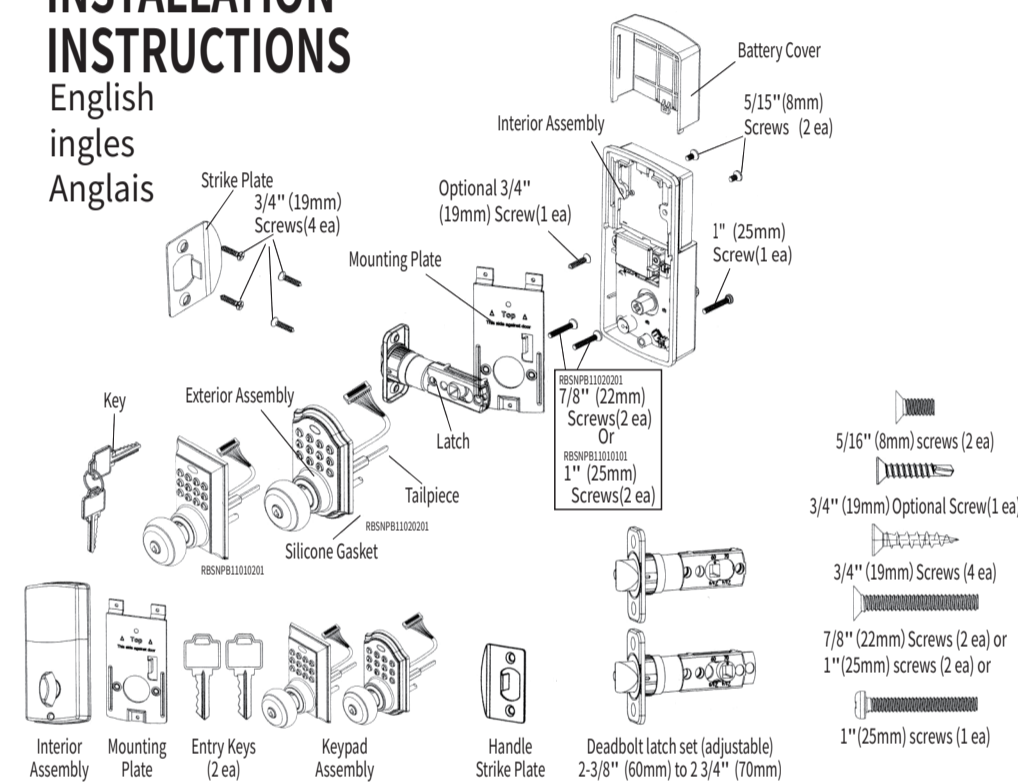




INSTALLATION INSTRUCTIONS

English
ingles
Anglais



2 TOOLS REQUIRED

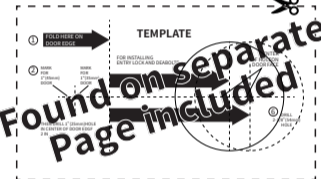
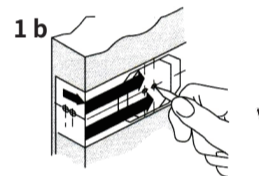
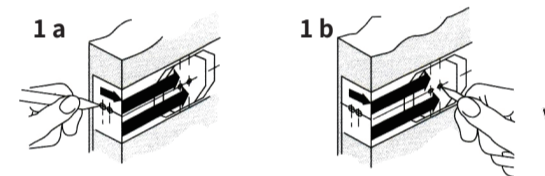


DRILLING HOLE IN DOOR

Note: Please read and understand this entire manual before attempting to assemble, operate or install this product. Do not use an electric screwdriver. Only hand tighten screws with a Phillips head screwdriver. **DO NOT OVER TIGHTEN SCREWS**. If your door has pre-drilled holes skip to step 3 c.

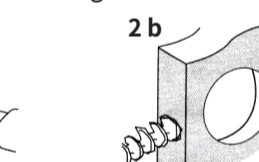
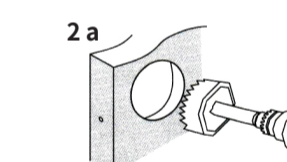
1. Mark door for drilling

- Start 38" from floor. Fold and apply template to high edge of door.
- Mark center hole on door face through guide on template for 2-3/8" (60mm) or 2-3/4" (70mm) backset.



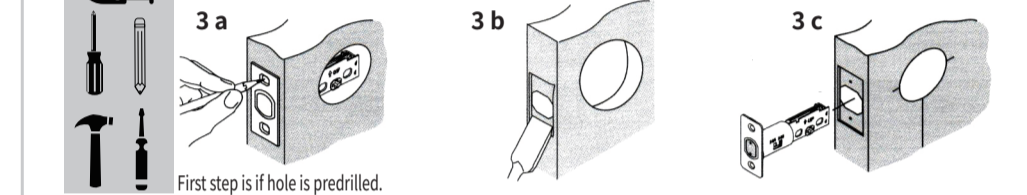
2. Drilling holes

- Drill 2-1/8" hole through door face as marked for lock set.
- Drill 1" hole in center of door edge for latch.



3. Marking the jamb hole location

- Insert latch in hole keeping it parallel to face of door. Mark outline and remove latch.
- Chisel 1/8" deep or until face is flush with door edge.
- Insert latch and tighten screws.

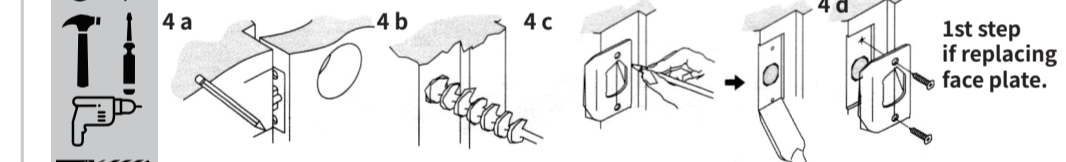


Note: For drive in latch drill hole sizes indicated on template and press latch until it's flush with door edge.

4. Install deadbolt strike plate into door frame

Note: if hole is predrilled skip to 4d

- Mark template from edge of jamb and locate the strike opening
- Drill 1" hole 1/2" deep in door jamb on center line of screws
- Outline outside edges of strike. Chisel 1/6" deep for strike or until flush
- Install strike and tighten screws (3/4" (19mm) Screws)



5 INSTALLING DEADBOLT LATCH SET

Note: Do not use **DRILL** for any screws

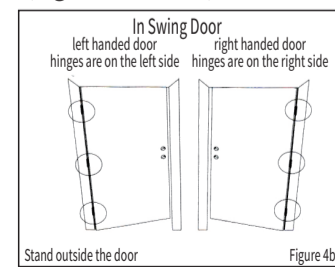
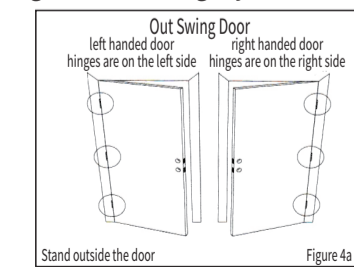
3. Installing the deadbolt latch set (need Phillips head screwdriver)

- Make sure the face plate sits flush with the door. Do not force the latch into the mortise flush. Chisel out excess material if necessary for a flush fit.
- Using two 3/4" (19mm) screws provided, screw the latch into the door with a hand held screwdriver. **DO NOT OVER TIGHTEN.**



4. Identifying your door handling

- If the hinges are on the left your door is left handed (Figure 4a and 4b)
- If the hinges are on the right your door is right handed (Figure 4a and 4b)



6 PREPARING THE INTERIOR ASSEMBLY

5. Unpack the interior assembly

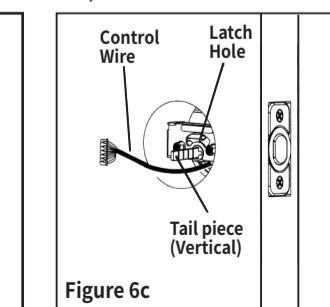
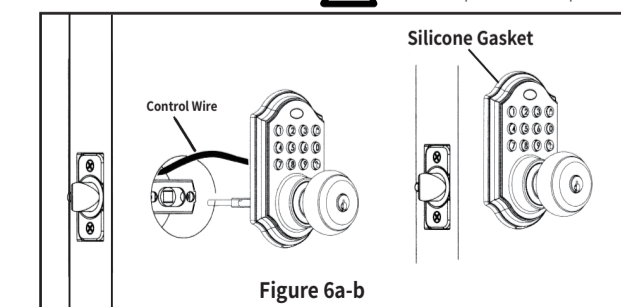
- Remove the battery cover by sliding the cover upward
- Locate the screws holding the Mounting Plate to the interior assembly. Remove the screws to release the mounting plate from the Interior Assembly.

INSTALLING EXTERIOR ASSEMBLY

6. Installing the exterior assembly

- Work with the Door Open for easy access.
- Unpack the Exterior Assembly. Use care to not scratch the green circuit board during handling and installation.
 - Check that the Rubber Gasket is properly seated on the Exterior Assembly (Figure 6a-b).
 - Insert the Exterior Assembly onto the door with the tail piece going through the Deadbolt Latch Set cross shaped spindle connector in the VERTICAL POSITION. Route the Control Wire through door over the Deadbolt Latch Set (Figure 6c).

NOTE: Tail piece must be positioned vertically



7

7. Securing the exterior assembly to the door

- From the side marked "This side against door", route the Control Wire through the rectangular slot in the Mounting Plate rectangular slot in the Mounting Plate.
- Place Mounting Plate against door with tailpiece passing through the center hole in the three hole set (Figure 7a-f).
- Secure the Mounting Plate to the Exterior Assembly using two 7/8" (22mm) or 1" (25mm) Screws.
- Hand tighten with a Phillips Head Screwdriver leaving loosely connected (Figure 7a-f).
- Check that the Rubber Gasket is properly aligned and correct as necessary
- Check vertical alignment of the lock (Figure 7a-f).
- Tighten securely with a hand held Phillips Head Screwdriver. **DO NOT OVER TIGHTEN.**

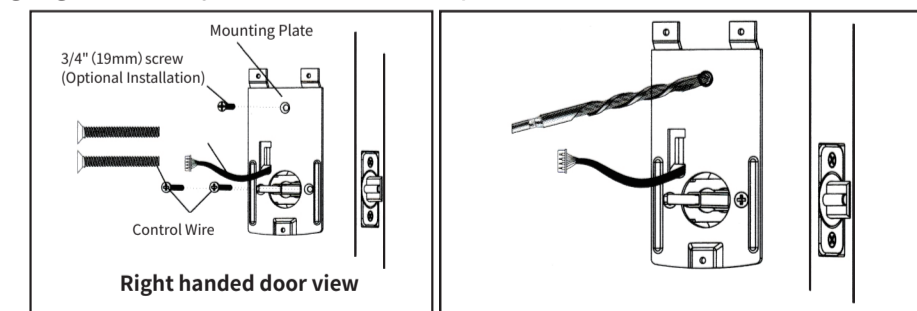


Figure 7a-f

Figure 8a

8. Optional Installation

- Using a 1/16" (2mm) drill bit, drill a pilot hole in your door using the Mounting Plate upper hole as a guide (Figure 8a).
- Insert one 3/4" (19mm) screw and tighten.

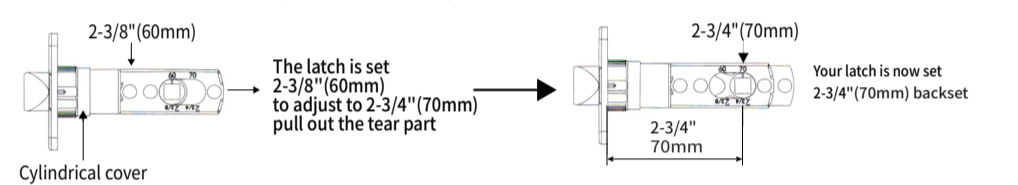
Note: Lock and unlock using the key to see if the Deadbolt Latch is opening and closing easily.

4

ADJUSTING DEADBOLT LATCH SET

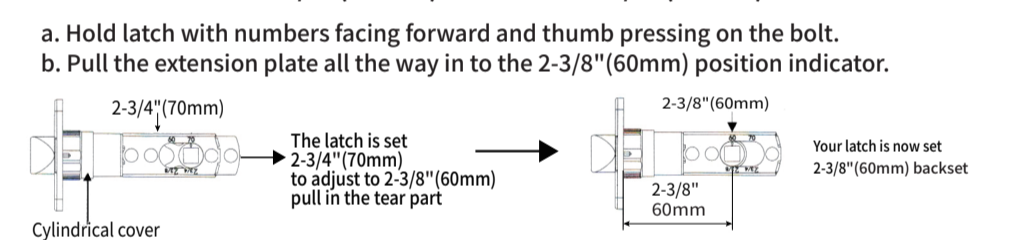
Note: Deadbolt latch set is shipped with the backset set at 2-3/8" (60mm) measures the backset (backset is distance between edge of the door and the center lock)

- To convert from 2-3/8" (60mm) backset to 2-3/4" (70mm) backset
 - Hold latch with numbers facing forward and thumb pressing on the bolt.
 - Pull the extension plate all the way out to the 2-3/4" (70mm) position indicator.



Note: Do not extend cylindrical cover past 2-3/4" (70mm)

- To convert from 2-3/4" (70mm) backset to 2-3/8" (60mm) backset
 - Hold latch with numbers facing forward and thumb pressing on the bolt.
 - Pull the extension plate all the way in to the 2-3/8" (60mm) position indicator.



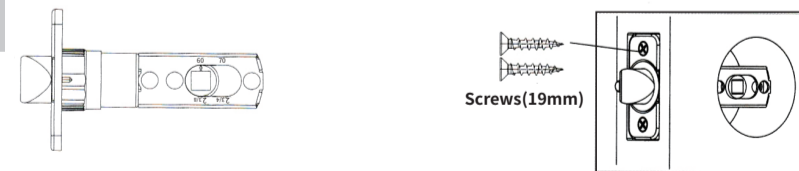
5

INSTALLING DEADBOLT LATCH SET

Note: Do not use **DRILL** for any screws

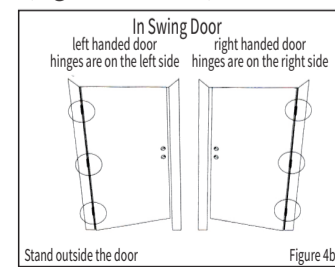
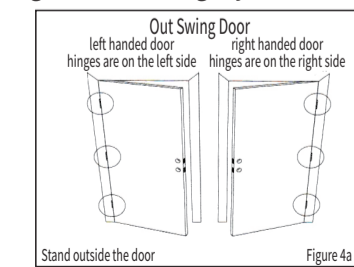
3. Installing the deadbolt latch set (need Phillips head screwdriver)

- Make sure the face plate sits flush with the door. Do not force the latch into the mortise flush. Chisel out excess material if necessary for a flush fit.
- Using two 3/4" (19mm) screws provided, screw the latch into the door with a hand held screwdriver. **DO NOT OVER TIGHTEN.**



4. Identifying your door handling

- If the hinges are on the left your door is left handed (Figure 4a and 4b)
- If the hinges are on the right your door is right handed (Figure 4a and 4b)



6 PREPARING THE INTERIOR ASSEMBLY

5. Unpack the interior assembly

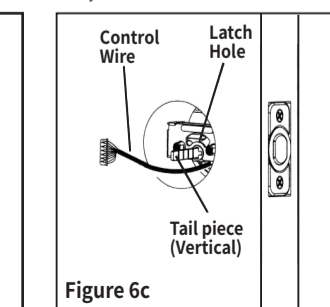
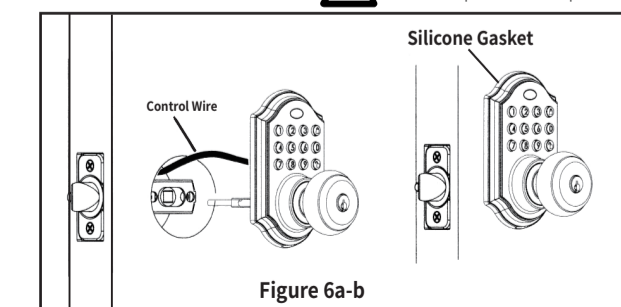
- Remove the battery cover by sliding the cover upward
- Locate the screws holding the Mounting Plate to the interior assembly. Remove the screws to release the mounting plate from the Interior Assembly.

INSTALLING EXTERIOR ASSEMBLY

6. Installing the exterior assembly

- Work with the Door Open for easy access.
- Unpack the Exterior Assembly. Use care to not scratch the green circuit board during handling and installation.
 - Check that the Rubber Gasket is properly seated on the Exterior Assembly (Figure 6a-b).
 - Insert the Exterior Assembly onto the door with the tail piece going through the Deadbolt Latch Set cross shaped spindle connector in the VERTICAL POSITION. Route the Control Wire through door over the Deadbolt Latch Set (Figure 6c).

NOTE: Tail piece must be positioned vertically



7

7. Securing the exterior assembly to the door

- From the side marked "This side against door", route the Control Wire through the rectangular slot in the Mounting Plate rectangular slot in the Mounting Plate.
- Place Mounting Plate against door with tailpiece passing through the center hole in the three hole set (Figure 7a-f).
- Secure the Mounting Plate to the Exterior Assembly using two 7/8" (22mm) or 1" (25mm) Screws.
- Hand tighten with a Phillips Head Screwdriver leaving loosely connected (Figure 7a-f).
- Check that the Rubber Gasket is properly aligned and correct as necessary
- Check vertical alignment of the lock (Figure 7a-f).
- Tighten securely with a hand held Phillips Head Screwdriver. **DO NOT OVER TIGHTEN.**

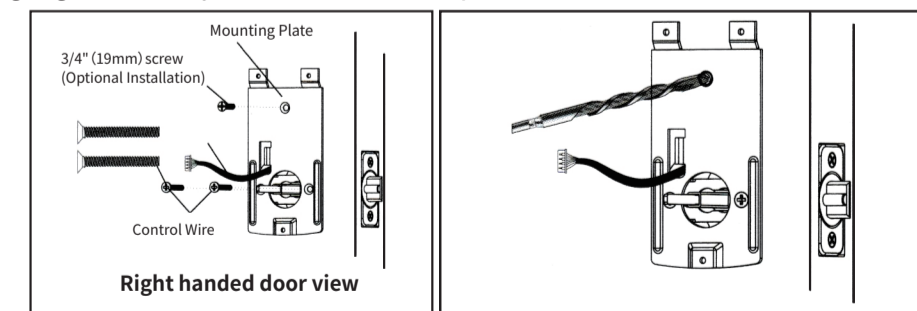


Figure 7a-f

Figure 8a

8. Optional Installation

- Using a 1/16" (2mm) drill bit, drill a pilot hole in your door using the Mounting Plate upper hole as a guide (Figure 8a).
- Insert one 3/4" (19mm) screw and tighten.

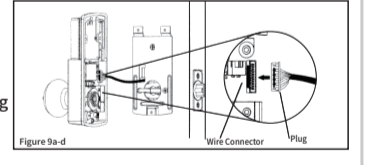
Note: Lock and unlock using the key to see if the Deadbolt Latch is opening and closing easily.

8

INSTALLING INTERIOR ASSEMBLY

9. Attach the control wire to the interior assembly

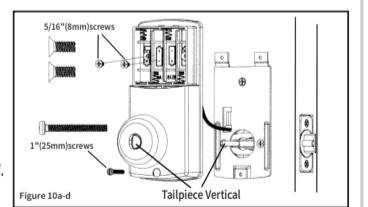
- Use care to attach the Control Wire male plug to the Interior Assembly female socket connector (Figure 9a-d).
- Do not force the Control Wire male plug into the Interior Assembly female socket connector (Figure 9a-d).
- The Control Wire male plug has two alignment tabs on the smooth side of the plug which is the top of the plug (Figure 9a-d).
- The Control Wire male plug is inserted with the smooth side up into the Interior Assembly female socket connector (Figure 9a-d).



10. Attach the interior assembly to door

- Position the Interior Assembly over the tailpiece and push the Interior Assembly against the door (Figure 10a-b).
- Using two 5/16" (8mm) screws and one 1" (25mm) screw, attach the Interior Assembly to the Mounting Plate. **DO NOT OVER TIGHTEN SCREWS** (Figure 10a-b).

Note: Lock and unlock using Interior Knob to see if the latch is opening and closing easily.

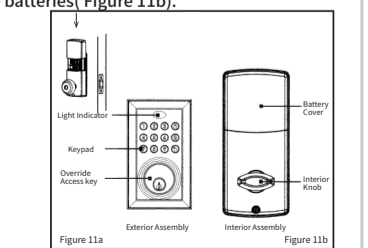


INSTALLING INTERIOR ASSEMBLY (CONT.)

11. Installing Batteries

- Insert 4 AA high quality Alkaline batteries into the Battery Compartment in the direction noted +/- on the Compartment. The Lock will beep 2 times, the keypad will illuminate blue, and the Light Indicator will flash green twice to signify that it has received power (Figure 11a).
- Slide the Battery Cover down into the track on the Interior Assembly to cover the batteries (Figure 11b).

Note: Do not touch the Keypad until the blue light turns off. Do not use rechargeable batteries or non-alkaline batteries



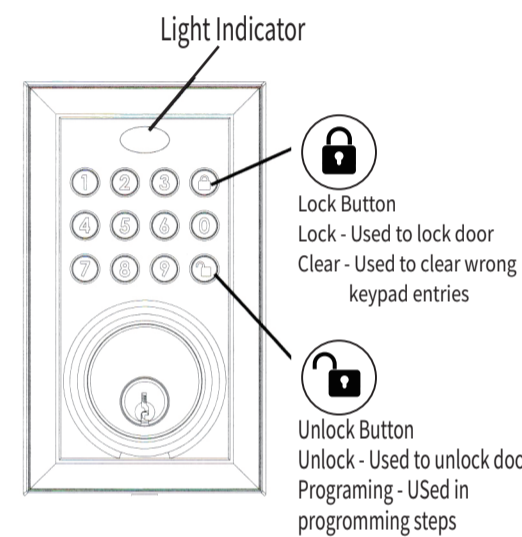
12. Testing Lock

- With the Door Open
- Test the lock using the Interior Knob. The bolt should move smoothly.
 - Test the lock using the keypad. To lock press [L] and then press "1234" [R]

Figure 11a

Figure 11b

9 PROGRAMMING AND OPERATING INSTRUCTIONS



- Red**
- Indicates Failed Programming Step
 - Indicates locking is Successful
- Green**
- Indicates Successful Programming Step
 - Indicates Unlocking is Successful

BATTERIES (NOT INCLUDED)

Electronic lock requires (4) High Quality AA Alkaline batteries. When all 4 batteries are installed in the correct position, you will hear 2 beeps and keypad will illuminate blue. DO NOT TOUCH the keypad until the keypad stops illuminating.

10 FACTORY SETTINGS PROGRAMMING SYMBOLS

The lock comes factory preset with a:

- PC** Programming Code. 123456
- UC** User Code - 1234
- ID** User ID - 01
- lock/Clear** (lock icon)
- Unlock/Programming** (unlock icon)
- Programming Code** (PC icon)
- User Code** (UC icon)
- User ID** (ID icon)
- Type Code** (ENTER icon)
- Push Button** (PRESS icon)

Please change the Programming Code **PC** and User Code **UC** as soon as possible after installation to insure security.

SETUP MODE

- Add User Code** -Max 50 Users (01-50)
- Delete User Code**
- Delete All User Code**
- Change Programming Code**
- Auto Lock** -Max 900 seconds (20-900)
- Sound 1=OFF 2=ON**
- Vacation Mode**

11 PROGRAMMING TIPS

5 Seconds clear Complete all the programming steps in the programming mode within 5 seconds. Use the **lock** key to clear entries in case a wrong button is pushed

LOCKING AND UNLOCKING

To unlock the lock using keypad: Enter a valid User Code (default code is 1234) and press **unlock** and hear 1 beep and lights green

To lock the lock using keypad: Press **lock** and then hear 2 beeps lights red

CHANGING PROGRAMMING CODE

Change current or present programming code

Factory default programming code **PC** = 123456, this is the master password for your lock. All programming function requires this code. Follow the below sequence to change the Programming Code **PC** to your custom (4-8) digit combination.

For Example: To change programming code = 123456, enter the following:

ENTER PC 123456 **PRESS** **lock** **PRESS** **4** **PRESS** **lock** **ENTER** **lock** **PRESS** **lock** **ENTER**

Re-Enter New **PC** Code **PRESS** **lock** 1Beep and light indicator illuminates green

ADDING USER CODES

To add a new User Code (you can add up to 50 new user codes)

The User Code **UC** must be a 4-8 digit combination. Each User Code **UC** is then linked to a User ID **ID** (which is any number between 01-50) to identify an individual User Code **UC**. (User ID 1-9 should be entered as 01-09 so they are 2 digits)

For example: To add the User ID - 08 to User Code -3456, enter the follow Note: Start with User 02 so the system deletes the factory user.

ENTER PC Your New Code **PRESS** **lock** **PRESS** **1** **PRESS** **lock** **ENTER** **ID** Enter User ID **PRESS** **lock** **ENTER** **UC**

Key in your **UC** User Code **PRESS** **lock** **ENTER** **UC** Re-Enter **UC** User Code **PRESS** **lock** 1Beep and light indicator illuminates green

NOTE: When a NEW USER CODE is set, the default factory code (1234) is deleted for safety.

12 DELETING USER CODES

Delete one existing or preset user code

(The unit comes with a factory user id **ID** = 01 for user code **UC** =1234)
Important: to delete 1 User Code **UC**, the lock must have more than 1 User Code **UC** in its database

ENTER PC Your New Code **PRESS** **lock** **PRESS** **2** **PRESS** **lock** **ENTER** **ID** Enter User ID(01) **PRESS** **lock** **ENTER** **ID**

Re-Enter User ID(01) **PRESS** **lock** 1Beep and light indicator illuminates green

Delete all User Codes

Important: This will delete the user codes but not the programming code. Enter the following:

ENTER PC Your New Code **PRESS** **lock** **PRESS** **3** **PRESS** **lock** **ENTER** **PC** Your New Code **PRESS** **lock** 1Beep and light indicator illuminates green

AUTOMATIC LOCK FUNCTION

Set or Cancel Auto Lock

You can set the lock to automatically close after each time the lock is opened. Time value rang = 20 - 900 seconds, enter the following:

Set Auto Lock:

ENTER PC Your New Code **PRESS** **lock** **PRESS** **5** **PRESS** **lock** **ENTER** Time Value (20-900) **PRESS** **lock** 1Beep and light indicator illuminates green

To cancel Auto Lock set the time to 00, enter the following:

Cancel Time Value Auto Lock:

ENTER PC Your New Code **PRESS** **lock** **PRESS** **5** **PRESS** **lock** **ENTER** **00** **PRESS** **lock** 1Beep and light indicator illuminates green

13 TEMPORARILY DISABLE AUTO-LOCK

Disable

While in Auto-Lock mode, unlock the door using **lock**, within 10 seconds you must turn the locking knob by hand to the locked position. Wait more than 2 seconds, then turn the locking knob back to the unlocked position. The Auto-Lock mode is now disabled.

Restore

To restore the Auto-Lock function, you can turn the locking knob by hand to the locked position, wait more than 2 seconds or press the **lock** Lock button on the keypad.

SOUND ON AND OFF

You can "mute" or turn the "sound on" on your lock by entering the following (Factory setting is sound on):

ENTER PC Your New Code **PRESS** **lock** **PRESS** **6** **PRESS** **lock** **PRESS** **1=OFF** **PRESS** **lock** **2=ON** **PRESS** **lock**

1=OFF Light indicator illuminates green **2=ON** 1 Beep and light indicator illuminates green

VACATION MODE

With Vacation Mode enabled, the system enters into a low power consumption mode. During this mode, all buttons and functions including the remote control will be invalid until they are re-enabled

Enable:

ENTER PC Your New Code **PRESS** **lock** **PRESS** **10** **PRESS** **lock** **PRESS** **1** **PRESS** **lock** 1Beep and light indicator illuminates green then lock door

Disable:

To disable the vacation mode, you must press and hold **lock** for more than 3 seconds, then input **PC** to unlock the door. Vacation mode is now disabled.

NOTE: if you only press **lock** for more than 3 seconds but do not input **PC**, the system will remain in vacation mode.

14 RESTORE FACTORY SETTINGS

To reset the lock to the original factory settings including the Programming Code **PC** and all User Codes **UC** remove one battery for 10 seconds. Reinsert the battery and wait for a long and short beep. Press **lock** 3 times within 3 seconds. The lock and the light indicator will turn green.

LOW BATTERY WARNING

Beeps and LED Flashes red for 5 seconds. Replace with new high quality alkaline batteries

AUDIO AND VISUAL MESSAGE GUIDE

Unlock/Valid Programming	1 Long beep and LED illuminates green
Lock	2 short beep and LED illuminates red
Invalid Programming	2 short beep and LED flashes red twice
Low Voltage	Beeps for 5 seconds(7/9 times depends on operation in Unlock/Lock)
Super Low Voltage	4 Short beeps and LED Flashes red four times
4 Incorrect Code Entry Attempts	2 Short beeps and LED illuminates red each attempt
Power On	1 long beep and 1 short beep and LED illuminates green
Chip Reset	1 long beep and 1 short beep and LED illuminates green(may occur several times or once in a while)
Lock Error	3 long beeps LED flashes red three times
Repeat Operation After Lock Error	2 Short Beeps three times LED flashes red six times

15 INSTALLATION TROUBLE SHOOTING

Issue	Solution
Latch works backwards - lock unlocks when lock button is pushed or locks when unlock button is pushed	Direction switch is set to incorrect setting. Remove the Interior Assembly and move the switch to the opposite direction. <ul style="list-style-type: none"> Check that your switch is set in the correct position Left or Right Handed door. If Correct <ul style="list-style-type: none"> Rotate Interior Knob and reinstall Interior Assembly. Retest again while holding Assembly in place.
Interior Knob will not turn	Knob or vertical tail- piece is installed in incorrect position. Remove Interior Assembly and reposition the Interior Knob. With the Deadbolt Latch retracted is vertical.
Lock will not function electronically	<ul style="list-style-type: none"> Check that all batteries are fresh high quality Alkaline Batteries. Check for proper polarity (+ -) of all batteries. Check that the Control Wire is attached to the Interior Assembly.
Lock gives error signal when opening or locking dead bolt latch will not extend or retract completely when door is closed	Unlock door using Key or Interior Knob. While door is open, check that the Deadbolt Latch operates smoothly. Check for proper alignment of the strike plate, adjust as needed to assure there is no binding against the Deadbolt Latch.
Deadbolt Latch is Sticking	Installation screws of the lock may be too tight and have to be loosened. <ul style="list-style-type: none"> Remove Interior Assembly. Slightly loosen the Mounting Plate screws. Lock and unlock using the Key. Reattach Control Wire and Interior Assembly.